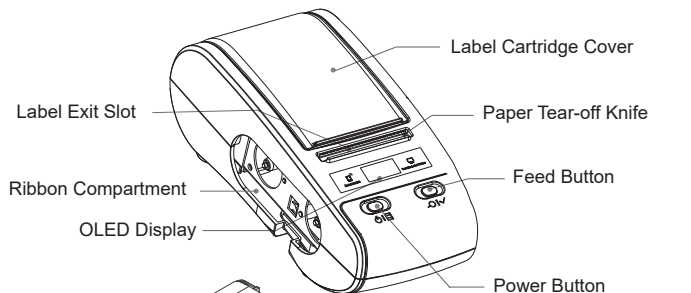
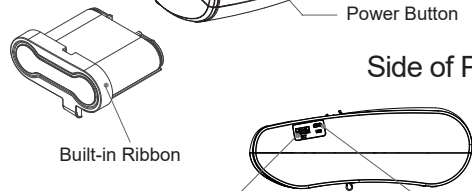


Printer Parts

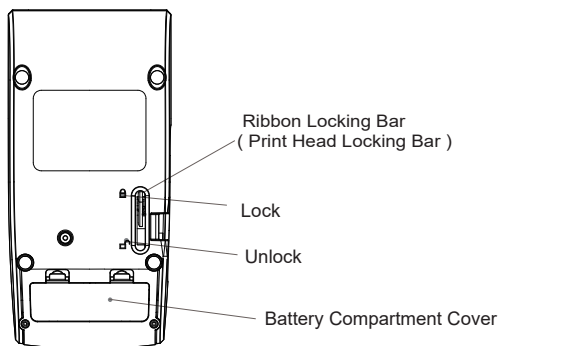
Front of Printer



Side of Printer



Back of Printer



Basic Operation

1. Ribbon Installation

Take out ribbon: pull ribbon locking bar to unlock, take ribbon out.
Install ribbon: pull ribbon locking bar to unlock, insert ribbon to the bottom of ribbon compartment, hold it by hand and pull locking bar to lock.

2. Power On the Printer

Press power button for 1.5s to turn the printer on.

3. Label Roll Installation

Label size: printable side outward, max roll diameter 65mm. Label width 12 to 54mm (including body paper).

Install label roll: put in label roll, make printable side face down, move the left adjusting plate to right to fix the label. Insert front end of the first label into label guiding slot, press feed button simultaneously to locate label.


4. Feed Label

Gap label/Black mark label:
short press feed button to feed one label, feed several labels by long press;
Continuous paper:
press feed button to start feeding, release feed button to stop.
Before feeding, please select the correct paper type in printer advanced settings, as well as in App settings.

5. Auto Shutdown

Printer will shut down automatically if no use it for a long period. Time of automatic shutdown can be set by setting button, the default time is 15 minutes.

6. Set Up Printer

Short press power button, printer enters setting status when the icon  appears on the top left corner of OLED display, then press feed button to make corresponding options.

7. Power Bank Function

The printer provides 5V (500mA) power for external devices via USB interface.

Connect with Printer

1. Install Editing Application

Scan QR Code to download label editing App (Android, iOS). Or search App name **"WePrint"** from Google Play or App Store.



2. Connect with Printer via Blue Tooth

Connect in "WePrint" App, not from cellphone Setting.

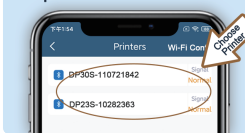
Step 1



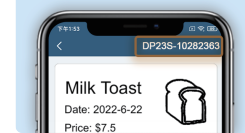
Step 2



Step 3



Connection Successful



3. Free Official Templates

Various templates available for different industries, from "Template"- "Cloud", no need to login.

4. Login (Cloud Directory)

Function of Cloud Directory is upload custom label templates to Cloud account, share among friends or colleagues. Please contact with supplier for login username and password.

Specifications

Display Type	OLED display
Print Method	Thermal transfer line
Print Color	Black and white, others same as ribbon color
Resolution	203 DPI/300 DPI (optional)
Dot per Line	384 dots/line
Print Speed	15 ~ 50 mm/s
Battery Runtime	150 ~ 180 m (12.5% print darkness)
Standby Time	About 5 years (power off)
Battery Capacity	2600 mAh
Charge Mode	5V USB
Charge Time	6 ~ 7 h
Power Bank Function	Support
Paper Type	Self-adhesive paper
Paper Form	Roll paper
Paper Size	54(W) × dia.65 mm
Print Width	48 mm
Paper Thickness	0.05 ~ 0.15 mm
Dimension	205 (L) × 106 (W) × 78 (H)mm
Weight	725 g
Standard Accessories	Power adapter, battery, ribbon, USB cable
IP Standard	IP54
Operating Temperature	0 C ~ 45 C
Interface	Micro USB, Blue Tooth (Android, iOS), 2.4G WiFi (optional)
Command Set	LPAPI®
Location Mode	Reflection-Type, Correlation (optional)
Self-check Function	Cover open, paper out, low battery, overtemperature
Print Contents	<ul style="list-style-type: none">• Text, picture, line, graphics• 1D Barcode: CODE-39, CODE-128, EAN, UPC, other common ones• 2D Barcode: QR Code, PDF417, DataMatrix

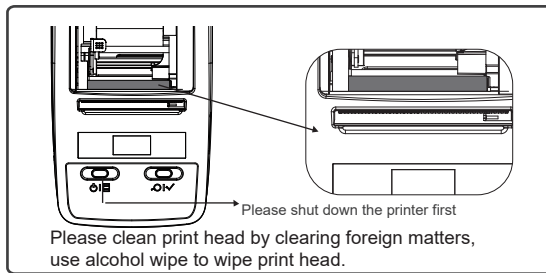
Safety Notices

Please compliance with following notices during operation

- ⚠ NOTE Do not disassemble the printer by yourself. Please read this manual carefully before use.
- ⚠ WARNING Turn off the power immediately if a malfunction occurs. When the printer or charger emits smoke or smelliness, please remove the charger and battery immediately, be aware of getting scalded.
- ⚠ WARNING Do not use the printer near petrol station, fuel depot or other inflammables.
- ⚠ NOTE The print head is still heated, do not touch it after the printing process.
- ⚠ NOTE Please choose the original label papers, or poor printing effect and printer platen roller damage can result.
- ⚠ NOTE Please recharge the printer regularly if it is not used for a long time to protect battery life.
- ⚠ NOTE Before replacing the battery, please make sure the printer turns off, or power supply is disconnected if you use a charger.

Maintenance

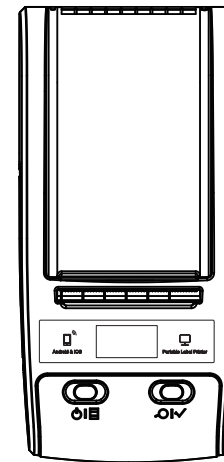
1. If printer prints blurry, feed label with loud noise or foreign matters stuck on print head.
2. Please make sure rubber roller is cool, then use alcohol wipe to clean rubber roller surface.



Portable Thermal Transfer Label Printer

Portable Printer

USER'S MANUAL



Please read the manual carefully before using, and keep it for future reference