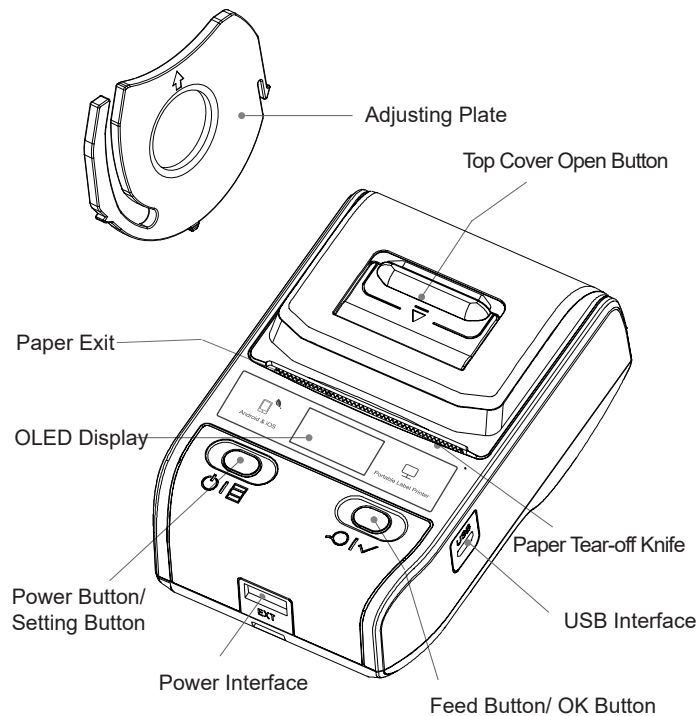


Printer Parts



Basic Operation

1. Power On

Press power button for 1.5s to turn the printer on.

2. Paper Roll Installation

Open top cover, put in paper roll, keep the printable side face down, put the left adjusting plate into the correct slot to fix the label. Pull out part of paper by manually, then close the top cover to ensure that it is closed tightly.

3. Feed Paper

Gap label/Black mark label:

short press feed button to feed one label, feed several labels by long press;

Continuous paper:

press feed button to start feeding, release feed button to stop.

Before feeding, please select the correct paper type in printer advanced settings, as well as in App settings.

4. Power Off

The printer will shut down automatically if no use it for a long period.

Time of automatic shutdown can be set by setting button, the default time is 15 minutes. Press power button for 1.5s to shut down the printer.

5. Set Up Printer

Short press setting button, the printer enters setting status when the icon appears on the top left corner of OLED display, press OK button to make corresponding options.

6. Charge Printer

5V Output charger and power bank with USB port are the two ways to charge printer.

7.Power Bank Function

The printer provides 5V (600mA) power for external devices via USB interface.

Connect with Printer

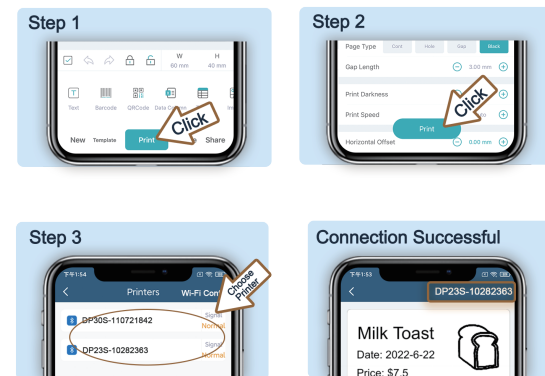
1. Install Editing Application

Scan QR Code to download label editing App (Android, iOS). Or search App name **"WePrint"** from Google Play or App Store.



2.Connect with Printer via Blue Tooth

Connect in "WePrint" App, not from cellphone Setting.



3.Free Official Templates

Various templates available for different industries, from "Template"- "Cloud", no need to login.

4.Login (Cloud Directory)

Function of Cloud Directory is upload custom label templates to Cloud account, share among friends or colleagues. Please contact with supplier for login username and password.

Specifications

2 inch Thermal Label Printer

Display Type: OLED display

Print Method: Thermal, inkless printing

Print Color: Black and white

Max Print Width: 48mm

Label Size: 20-50mm wide, max roll diameter 50mm

Resolution: 203 DPI/300 DPI

Interface: Wireless Blue Tooth for Cellphone/Pad, USB wire for PC

Battery: Rechargeable li-ion battery, 1500mAh

Command Set: LPAPI®

3 inch Thermal Label Printer

Display Type: OLED display

Print Method: Thermal, inkless printing

Print Color: Black and white

Max Print Width: 72mm

Label Size: 25-75mm wide, max roll diameter 50mm

Resolution: 203 DPI

Interface: Wireless Blue Tooth for Cellphone/Pad, USB wire for PC

Battery: Rechargeable li-ion battery, 1500mAh

Command Set: LPAPI®



Please scan QR Code
for user's manual in other languages.

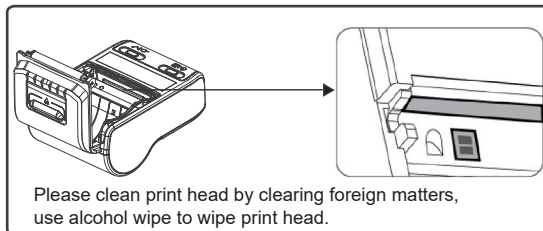
Safety Notices

Please compliance with following notices during operation

- ⚠ NOTE Do not disassemble the printer by yourself. Please read this manual carefully before use.
- ⚠ WARNING Turn off the power immediately if a malfunction occurs. When the printer or charger emits smoke or smelliness, please remove the charger and battery immediately, be aware of getting scalded.
- ⚠ WARNING Do not use the printer near petrol station, fuel depot or other inflammables.
- ⚠ NOTE The print head is still heated, do not touch it after the printing process.
- ⚠ NOTE Please choose the original label papers, or poor printing effect and printer platen roller damage can result.
- ⚠ NOTE Please take out the battery and store it separately for long term storage, or it may cause battery failure even the leakage, which may damage the printer.
- ⚠ NOTE Before replacing the battery, please make sure the printer turns off, or power supply is disconnected if you use a charger.

Maintenance

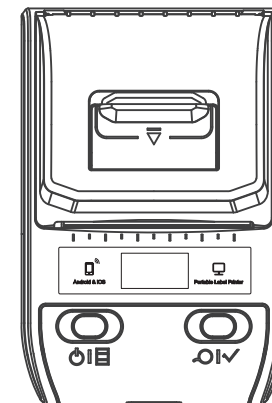
- 1.If printer prints blurry, feed label with loud noise or foreign matters stuck on print head.
- 2.Please turn printer off and make sure rubber roller is cool, then use alcohol wipe to clean rubber roller surface.



Portable Thermal Printer

Portable Printer

USER'S MANUAL



Please read the manual carefully before using, and keep it for future reference